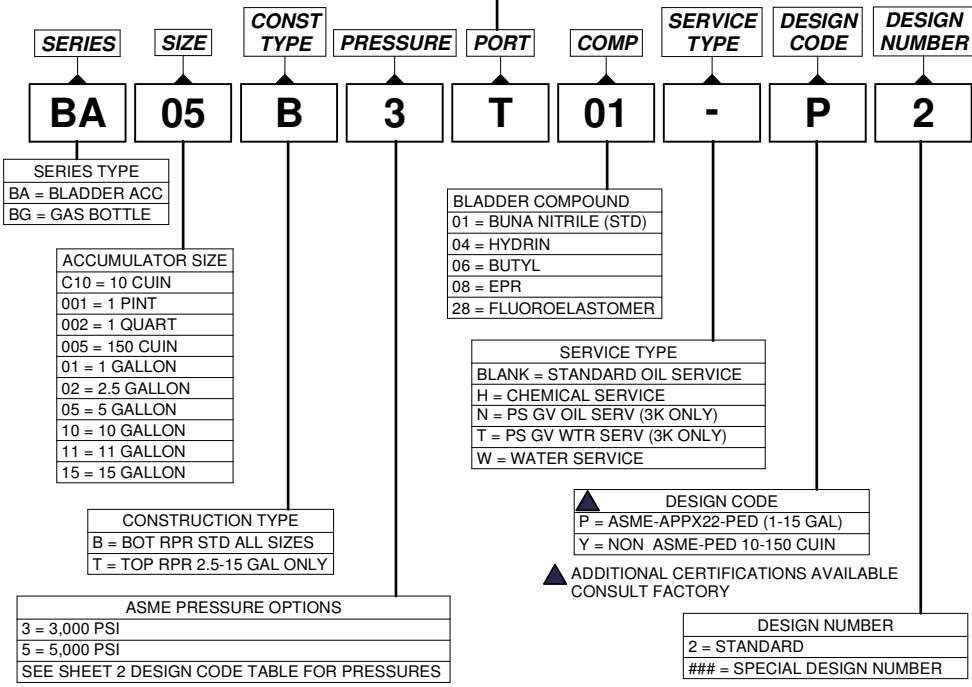


PORT OPTIONS CHART						
Column 1	Column 2	Column 3	Column 4	Column 5	Column 6	Column 7
SIZE	"T" STYLE SAE	"U" STYLE NPTF PIPE THD	"F" STYLE CODE 62 FLG	"R" STYLE BSPP PIPE THD	"Y" STYLE ISO 6149-1	"X" STYLE NPTF PIPE THD
10 CUIN	#8 SAE (3/4"-16)	3/4"-14 MALE THD	N/A	N/A	N/A	N/A
1 PINT	#12 SAE (1 1/16"-12 THD)	3/4"-14 FEMALE THD	N/A	G3/4"-14 THD	M27 X 2 THD	N/A
1 QUART	#16 SAE (1 5/16"-12 THD)	1"-11.5 FEMALE THD	N/A	G3/4"-14 THD	M33 X 2 THD	N/A
150 CUIN	#16 SAE (1 5/16"-12 THD)	1"-11.5 FEMALE THD	N/A	G3/4"-14 THD	M33 X 2 THD	N/A
1 GAL	#20 SAE (1 5/8"-12 THD)	1 1/4"-11.5 FEMALE THD	1 1/4" CODE 62	G1 1/4"-11 THD	M42 X 2 THD	N/A
2.5-15 GAL	#24 SAE (1 7/8"-12 THD)	2"-11.5 FEMALE THD	1 1/2" CODE 62	G2"-11 THD	M48 X 2 THD	1 1/4" NPTF

CODE 61 FLANGE AVAILABLE
 FOR "ASME ONLY" MODELS (3,000 PSI [207 BAR])
 CONSULT FACTORY

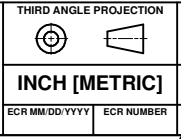


ABBREVIATION DESCRIPTIONS	
CUIN	= CUBIC INCHES
GV	= GAS VALVE
PS GV	= POPPET STYLE GAS VALVE
T&B	= TOP & BOTTOM
BOT	= BOTTOM
RPR	= REPAIR
CERT	= CERTIFICATION

THIS DOCUMENT AND THE INFORMATION IT CONTAINS IS CONFIDENTIAL AND PROPRIETARY TO PARKER-HANNIFIN CORPORATION AND ITS AFFILIATES ("PARKER"). MAY NOT BE COPIED OR DISCLOSED TO OTHERS OR USED FOR ANY PURPOSE OTHER THAN CONDUCTING BUSINESS WITH PARKER, AND MUST BE RETURNED OR DESTROYED AND ALL FURTHER USE DISCONTINUED AT PARKER'S REQUEST. THE RECIPIENT OF THIS DOCUMENT IS ADVISED THAT IMPROPER SELECTION OR IMPROPER USE OF PARKER SYSTEMS OR COMPONENTS CAN CAUSE DEATH, PERSONAL INJURY AND PROPERTY DAMAGE, AND IS SOLELY RESPONSIBLE THROUGH ITS OWN ANALYSIS AND TESTING FOR THE FINAL SELECTION OF PARKER SYSTEM AND COMPONENTS AND ASSURING THAT ALL PERFORMANCE, ENDURANCE, MAINTENANCE, SAFETY AND WARNING REQUIREMENTS OF THE INTENDED APPLICATION ARE MET. COPYRIGHT PARKER © YEAR OF COPYRIGHT IS THE YEAR(S) INDICATED ON THIS DOCUMENT. ALL RIGHTS RESERVED.

UNLESS OTHERWISE SPECIFIED:
 DIMENSIONS: IN [MM], WEIGHTS: LB [KG]
 TOLERANCES: .XX [XXX] = ±.01 [0.254]
 .XXX [XXXX] = ±.005 [0.1270]
 ANGLES = ±2°
 SURFACE FINISH: 125 µIN [3.2 µM] RMS
 BREAK EDGES: R.005-.015 [0.1270-0.3810]
DO NOT SCALE DRAWING

ECR CHANGE DESCRIPTION



MATERIAL

REFERENCE

WEIGHT

PARKER HANNIFIN CORPORATION
ACCUMULATOR & COOLER DIVISION

MACHESNEY PARK, IL 61115, USA

MODEL CODE SYSTEM FOR CATALOG/PRICE SHEET
 ASME-NON ASME-PED-SEP-CRN-AS1210
 BLADDER ACC & GAS BOTTLE (BG SERIES) ONLY

SHEET 1 OF 2

REV **A**

MODEL / PART NUMBER

DRAWING NUMBER
 8738450000

Available Certifications and Design Pressures


DESIGN CODE TABLE

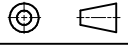

Style	Size	US DESIGN CODES				PED DESIGN CODES			CANADIAN & AUSTRALIAN CODES			
		Non-ASME	ASME	Non-ASME & ASME Design Pressure	Appendix 22 Design Pressure	Stand. Eng. Practice (SEP)	CE	PED Design Pressure	CRN	AS 1210	CRN & AS 1210 Design Pressure	
											ASME	Appnd 22
Bottom Repairable, Standard Pressure	10 cu in	Y		3000 psi		Y		330 bar	Upon Request	Upon Request	Upon Request	Upon Request
	Pint	Y		3000 psi		Y		330 bar	Upon Request	Upon Request	Upon Request	Upon Request
	Quart	Y	R**	3000 psi		Y		330 bar	Upon Request	Upon Request	Upon Request	Upon Request
	150 cu in	Y	R**	3000 psi			Y	330 bar	Upon Request	Upon Request	Upon Request	Upon Request
	1 Gallon		P	3000 psi	4000 psi		P	330 bar	P	P	3000 psi	4000 psi
	2.5-15 Gallon		P	3000 psi	3600 psi		P	330 bar	P	P	3000 psi	3600 psi
Bottom Repairable, High Pressure	1 Gallon		P	5000 psi	6600 psi		P	690 bar	Upon Request	Upon Request	Upon Request	Upon Request
	2.5-15 Gallon*		P	5000 psi	6600 psi		P	690 bar	Upon Request	Upon Request	Upon Request	Upon Request
Top Repairable, Standard Pressure	2.5-15 Gallon		P	3000 psi	3600 psi		P	330 bar	P	P	3000 psi	3600 psi
Top Repairable, High Pressure	2.5-15 Gallon*		P	5000 psi	6600 psi		P	690 bar	Upon Request	Upon Request	Upon Request	Upon Request

*High Pressure not available for 11 gallon size

**ASME Designs available by requesting an "R" in the Design Code position of the Model Code (Call Factory)

DESIGN CODE KEY
P = ASME / APPX 22 / PED
R = ASME / PED 10-150 CU. IN.
Y = NON ASME / PED 10-150 CU.

- 4:1 design factor for all 1 Gal & below & 2.5-15 Gal, 5K & 6K designs
- 3.5:1 design factor 2.5 -15 Gallon
 - 3.6 KPSI per ASME appendix 22
 - 330 bar per Pressure Equipment Directive
- **R – ASME versions available for quart & 150 cu. in sizes. Consult factory
- Other certs available (ABS, DNV, NR-13, SELO, etc) as design #'s 

<small>THIS DOCUMENT AND THE INFORMATION IT CONTAINS IS CONFIDENTIAL AND PROPRIETARY TO PARKER HANNIFIN CORPORATION AND ITS AFFILIATES ("PARKER"). MAY NOT BE COPIED OR DISCLOSED TO OTHERS OR USED FOR ANY PURPOSE OTHER THAN CONDUCTING BUSINESS WITH PARKER, AND MUST BE RETURNED OR DESTROYED AND ALL FURTHER USE DISCONTINUED AT PARKER'S REQUEST. THE RECIPIENT OF THIS DOCUMENT IS ADVISED THAT IMPROPER SELECTION OR IMPROPER USE OF PARKER SYSTEMS OR COMPONENTS CAN CAUSE DEATH, PERSONAL INJURY AND PROPERTY DAMAGE, AND IS SOLELY RESPONSIBLE THROUGH ITS OWN ANALYSIS AND TESTING FOR THE FINAL SELECTION OF PARKER SYSTEM AND COMPONENTS AND ASSURING THAT ALL PERFORMANCE, ENDURANCE, MAINTENANCE, SAFETY AND WARNING REQUIREMENTS OF THE INTENDED APPLICATION ARE MET. COPYRIGHT PARKER ©, YEAR OF COPYRIGHT IS THE YEAR(S) INDICATED ON THIS DOCUMENT. ALL RIGHTS RESERVED.</small>	UNLESS OTHERWISE SPECIFIED: DIMENSIONS: IN [MM], WEIGHTS: LB [KG] TOLERANCES: .XX [XXX] = ±.01 [0.254] XXX [XXXX] = ±.005 [0.1270] ANGLES = ±2° SURFACE FINISH: 125 µIN [3.2 µM] RMS BREAK EDGES: R.005-.015 [0.1270-0.3810] DO NOT SCALE DRAWING	ECR CHANGE DESCRIPTION	THIRD ANGLE PROJECTION 	MATERIAL	PARKER HANNIFIN CORPORATION ACCUMULATOR & COOLER DIVISION  MACHESNEY PARK, IL 61115, USA	SHEET 2 OF 2 MODEL / PART NUMBER	REV A
	INCH [METRIC]	REFERENCE	WEIGHT □	MODEL CODE SYSTEM FOR CATALOG/PRICE SHEET ASME-NON ASME-PED-SEP-CRN-AS1210 BLADDER ACC & GAS BOTTLE (BG SERIES) ONLY	DRAWING NUMBER 8738450000		
	ECR MM/DD/YYYY ECR NUMBER	DRAWN MM/DD/YYYY DRAWN BY 07/01/2016 JPK	CHECKED BY BM	APPROVED BY	1		